

Infant Site

Dallow Road, Luton, Bedfordshire, LU1 1TG
 Tel: 01582 733764- Option 2
 Email: infantadmin@foxdellprimary.uk

Foxdell Primary School

Growing, Learning and Achieving Together

Junior Site

Dallow Road, Luton, Bedfordshire, LU1 1UP
 Tel: 01582 733764- Option 1
 Email: junioradmin@foxdellprimary.uk



NEWSLETTER : Friday 13th December/ Autumn Term: Issue: 7



Head Teacher's Corner

Dear Families,

Welcome to our final newsletter for the Autumn Term. As we approach the end of this term, I would like to thank you all for your continued support. It has been a wonderful term filled with hard work and progress. Our children have demonstrated enthusiasm and commitment to their learning over the term, and are now enjoying our end of term events. I would especially like to thank our staff for their hard work and commitment. Despite any challenges, our staff have consistently gone above and beyond to ensure that every child receives the best possible experience.

We recently welcomed our School Improvement Advisor to the school. The focus of the visit was curriculum leadership. During the visit, some of our subject teams had the opportunity to meet with the advisor to discuss their subject area, the progress we're making, and how we continue to develop our curriculum to meet the needs of our children. The feedback we received was very positive, highlighting the strong dedication of our staff and the impact of our curriculum on children's learning and development. The hard work that has gone into shaping our curriculum was recognised, and we are excited to continue building on this success.

I am pleased to share that using the generous contributions from our school fundraising activities, such as the annual summer fair, all of the children in Years 1-6 were treated to a **Cinderella** pantomime last week. This was a great experience for the children and brought laughter and excitement. We are grateful for your ongoing support, and pleased that the money raised directly benefits the children.

Staffing news- we will be saying goodbye to Miss Rahman, who has decided to pursue new opportunities. Miss Rahman has been Eagles class teacher since the start of this year. We thank her for her hard work at our school and wish her the very best for the future. We are excited to welcome Mrs Itama, the new teacher for Eagles class after the Christmas break. Mrs Itama joined us in November and has been getting to know the children in Eagles Class. We look forward to working with her and know she will be a great addition to our team.

The last day of this term is Friday 20th December and we look forward to welcoming you back on Monday 6th January for the New Year.

Wishing you all a restful break and for those that are celebrating Hanukkah and Christmas, I hope you have a lovely time with your family and friends.

Best wishes
 Mrs R Nisar
 Headteacher



Monday 16th December
 Hanukkah Assembly

Wednesday 18th December
 Y1 Winter Performance
 for parents 9:30am

Thursday 19th December
 Class Parties PM

**Monday 23rd December -
 Friday 3rd January**
 School Closed for
 Christmas Break

Monday 6th January
 Children return to School

**Thursday 9th & Monday
 13th January**
 Y1 Trip to Wardown
 Museum

Friday 10th January
 Eco Poster Competition
 Deadline



It is with pleasure that we would like to announce our Head Girl and Head Boy for 2024-25
Congratulations to:
Aleena Sameer
Kaleem Amir



Don't forget the Reading Cafe at the Infant Site- every Thursday morning in your child's class!



MUSIC MARK SCHOOL
 2024 - 2025



ATTENDANCE MATTERS

The new attendance guidelines came into place from 19th August 2024. More information and FAQs about attendance can be found on our school website: <https://www.foxdellprimary.uk/attendance-1/>

Government guidance can be found here:

<https://educationhub.blog.gov.uk/2024/08/19/fines-for-parents-for-taking-children-out-of-school-what-you-need-to-know/>

We are open for 190 days in a school year which equates to 380 sessions including the morning and afternoon registration.



Our whole school attendance target is 96%

The class with the best attendance each week wins the attendance trophy and receives a best attendance certificate. Children in Reception receive a lucky dip prize if they have 100% attendance for the week. Attendance for the last two weeks:

Class	Attendance WB 02.12.24	Attendance WB 09.12.24	Class	Attendance WB 02.12.24	Attendance WB 09.12.24	Class	Attendance WB 02.12.24	Attendance WB 09.12.24
Wrens	91%	94.7%	Badgers	98.5%	98.8%	Ash	94.2%	93.8%
Swifts	92.9%	92.5%	Hedgehogs	95.6%	94.1%	Ivy	96.3%	96%
Robins	87.2%	96.8%	Chestnuts	94.8%	94.8%	Cedar	95%	94.3%
Dragonflies	92.3%	91.4%	Acorns	94.1%	88.3%	Kestrels	98.1%	97%
Ladybirds	99%	89.7%	Pinecones	97.2%	94.1%	Kites	95.4%	93.9%
Butterflies	91.7%	84.9%	Beech	100%	100%	Eagles	98.6%	99.3%
Squirrels	92.3%	98.1%	Oak	93.5%	94.2%			



Our Class H.E.R.O's for Week ending 06.12.24 and 13.12.24 are:

Infant Site: Ladybirds & Badgers

Junior Site: Beech

STARS OF THE WEEK

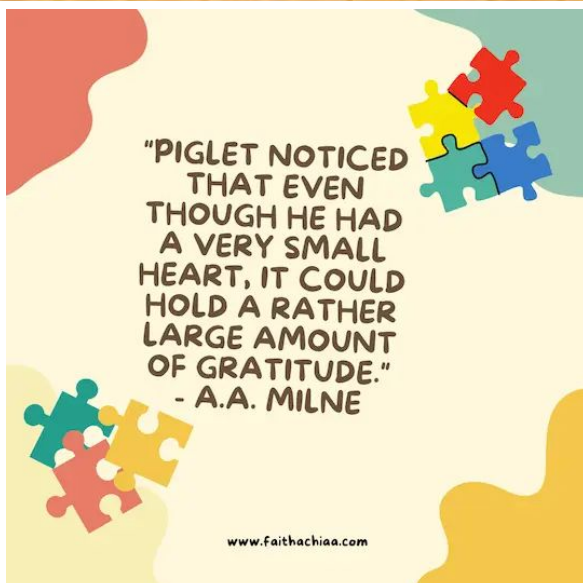


Congratulations to our STARS for the week ending 06.12.24 and 13.12.24

Robins	Wrens	Swifts	Dragonflies	Ladybirds	Butterflies	Badgers	Squirrels
			Shameer Haaniya	Hashim Zarnish	Ishaaq Hussam	Hayat Zion Chad Damanpreet	Burhan Umar Sarim Zaim
Hedgehogs	Chestnuts	Acorns	Pinecones	Beech	Oak	Ash	Ivy
Zainab Ishmaeel Eesa Aiza D	Alesia T Musa Malik Fahim A Amelia K	Farhana Samera H Bisma Usman	Musa M Malik Hajra Rosa I Zainab Z	Mihails Saaratu Shayan Noor	Irha Jarrah Navjot Umaima	Roberto Husnain Irina Aurelijus	Achilles Hiba Tarek Zohaib
		Cedar	Kestrels	Kites	Eagles		
		Arhum Julia Abeeha Ismael	Scarlett Rosie Suleman Eric	Musa B Saffiya Rehan Musa R	Alex Samiul Mirabela Hannatu		



Our Value for Autumn 2 is



WAYS TO PRACTICE GRATITUDE

Count your blessings

Say "thank you"

Express gratitude in different ways

Savor the good moments

Be grateful for the material things, too

Realize you have enough

Stop focusing on what you don't have

Change your perspective

Remember the bad times

Embrace humility

Find gratitude in challenges

Be grateful for what you can give others

Realize that nothing is permanent

Use reminders to practice gratitude

Remember to thank yourself

Around our School



This week we helped Luton Borough Council Parks Dept with a hedgerow planting project in the park next door to Foxdell Primary Junior site. They are adding 'wildlife corridors' to encourage wildlife into parks and open spaces, and to add and improve the diversity of the habitats available there. It was cold and muddy work but it was worth it!



Family Workers Corner



We all have times when we need some parenting support. With My Family Coach, you get all the help you need. Our help and ideas cover every stage of your child's development. We'll support you through the tough times, inspire you with new ideas, and share practical tips to make parenting that little bit easier.

<https://www.myfamilycoach.com/>

Starting School in September 2025

If you have a child that is due to start school next September (born between 1st September 2020 and 31st August 2021), the online application is now open on the Luton Borough Council's Website. Applications must be made by 15th January 2025. Please spread the word amongst the community for parents who have children of school age next year. Please note, our admissions are through

Luton Borough Council and therefore forms cannot be submitted to the school.

Please refer to the starting school guide which can be found on our website:

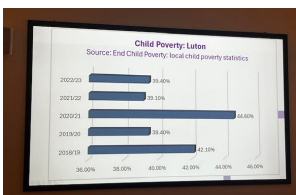
<https://foxdell.secure-primarysite.net/transition-to-high-school/>

2024 School Council Conference: Child Friendly Luton 2040

Amazing representatives of our School Council made us incredibly proud as they shared their views at the annual School Council Conference in Luton. Hosted by the University of Bedfordshire, leaders from across Luton gathered to discuss key issues within the town. The children worked with other schools to answer three BIG questions: what is Luton doing successfully already; what could be done better and what would we change if we had a magic wand.

Children from the across the borough unanimously agreed that safety in public spaces (e.g. playgrounds) would help to make Luton friendly by 2040. Lots of children also recognised the housing crisis that families are facing and asked for support with improving this.

Children were working alongside the future Luton Leaders (youth leaders) and current leaders such as Robin Porder (Chief Executive) and Paul Wagstaff (Director of Education). They presented well and shared their views in front of a large audience. Rosy even shared feedback from our group in a university lecture hall made up of leaders as well as pupils and staff from 35 Luton schools!



Every child received a bag of goodies from the sponsors of the day!

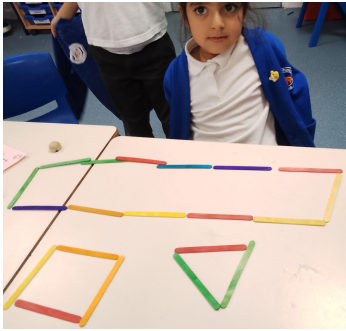
Around our School

Year R

We have been getting into the Christmas spirit in Reception with our focus text 'Jesus's Christmas Party'! We have learnt the Nativity Story and are able to retell it using words and actions.

We have learnt all about Light and Dark, and Day and Night. We are able to discuss nocturnal animals and have explored using torches to find hidden words in our Christmas sweet jars.

In Maths, we have been focusing on 4-sided shapes and making our own out of lolly sticks. We have been able to name the shapes we have made.



Year 1

In Year 1, we have been incredibly busy getting ready for our performance of Ralph the Reindeer. The children have been working hard learning their lines and the words to the songs.

They are excited to perform to an audience. We look forward to seeing lots of parents and carers watch our show on Wednesday 18th December at 9:30am.



Year 2

In Year 2, we have been learning about hot and cold countries and how the distance from the Equator affects the weather.

In maths, we have been learning about 2D and 3D shapes. We have also been finding lines of symmetry in 2D shapes by folding them and checking if both parts are the same.

In English, we have been using our knowledge of persuasive text structure to convince potential tourists to come to visit Luton. We talked about the attractions the town has to offer such as: Wardown Park, Luton Football Stadium, Inspire leisure centre, Galaxy and Stockwood Park, to name just a few.



Around our School

Year 3

In year 3, we have been enjoying our boomwhacker music lessons.



The children have had the opportunity to create musical compositions using this unique instrument.

We even had a chance to perform some Christmas songs.



Year 4

Year 4 have completed the Finish this.. Project in the role of a composer. Throughout the term, the children have experimented with music, colours, text and instruments to create their own operatic piece.



Year 5

Pupil leaders in Year 5 have had a busy week as they represented the school at a School Council conference as well as an Eco School planting mission with the council's Park Department (more information above). Our children are the leaders of the future and we are proud to empower them and give them a voice!

It's been a musical few weeks in Y5 as lots of pupils also attended a music recital at Challney High School for Boys. We were very proud to see some of our ex pupils playing instruments with such skills. After this, our pupils all performed the ukulele to their families. It was wonderful to see so many of you come to listen.



Year 6

Over the last two weeks, Year 6 have been busy learning and preparing to write an explanation text to show their understanding of how or why something works.

As part of their unit 'evolution and inheritance', pupils took part in an investigation to explore how birds have different beaks, which help them to adapt to their climate.



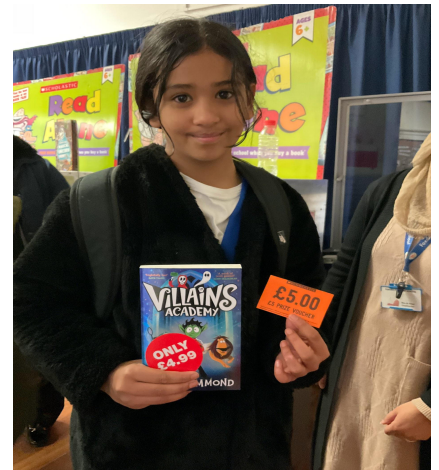
Around our School

Book Fair

Thanks to all our families who supported our book fair this year. Winners of our reading competition enjoyed using their £5 book fair vouchers to carefully choose books at the fair.

The total amount of sales came to a fantastic
£1,278.38!

Based on this amount, we will be able to get 55% back in book orders for our school. Well done Foxdell!



Around our School

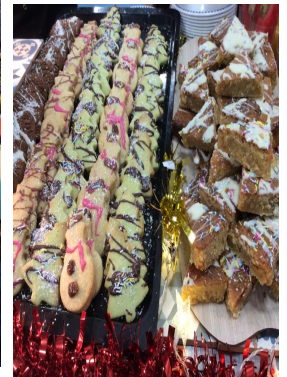


Christmas Celebrations

Last week, Santa made a special visit to the Infant children in the grotto. The children were very excited to meet Santa and his elves.



We enjoyed a delicious Christmas lunch, filled with festive treats,



On Thursday, we came together for our Christmas and Christingle service. A big thank you to David Kesterton from St. Peter's Church for joining us and sharing the meaningful story behind Christingle.



Year 4 Homework Project

In science, Year 4 have been learning about living things and their habitats. The children have done a fantastic job completing a homework project on different types of habitats. They created a variety of environments, from tropical rainforests to deserts, and creatively presented their findings. The effort they put into their work is truly impressive. A big thank you to all the parents and carers for your continued support in helping the children with their project.



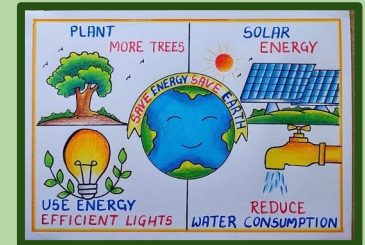
Around our School



ART competition- Design an ECO Poster

Your Poster:

- Should be bold, colourful and creative!
- Should have a title
- Must have your full name and class on the back
- Can be portrait or landscape
- Must be handed in to your teacher by Friday 10th January.
- Will be made into art work to be used around school, on the school website and on Twitter/X



Our school eco action plan says that we will:

- Save energy
- Pick up litter
- And improve the school grounds to create more wildlife habitats.
- But you can use ANY eco theme that you like!



There will be prizes for the winners!

Stockwood Illuminated 'Decorate a Jar' competition



Congratulations to our competition prize winners:

- Ayah - Butterflies
- Sophia - Dragonflies
- Muhammed Sarim - Squirrels

- Sara-Elena - Eagles
- Anum - Kestrels
- Birpartap - Oak



Thank you to everyone who entered the competition. We loved seeing your beautiful creations. Your decorated jars will be taken to Stockwood Discovery Centre this week to be included in the Stockwood Illuminated Winter Light Trail which starts today. (13th Dec).



At The National College, our WakeUpWednesday guides empower and equip parents, carers and educators with the confidence and practical skills to be able to have informed and age-appropriate conversations with children about online safety, mental health and wellbeing, and climate change. Formerly delivered by National Online Safety, these guides now address wider topics and themes. For further guides, hints and tips, please visit nationalcollege.com.

10 Top Tips for Parents and Educators SAFETY OVER THE FESTIVE SEASON

The holiday season, marked by Christmas and New Year, brings joy and togetherness but also presents unique safety challenges for children, families and educators. From busy holiday shopping, traveling and family gatherings to managing digital activity during school breaks, staying safe during this period requires heightened awareness. This guide offers practical tips to help families and educators maintain a more secure and fulfilling festive period.

1 MONITOR DIGITAL ACTIVITY

Children spend more time online during school holidays, increasing exposure to potential dangers such as cyberbullying, inappropriate content and online predators. Balancing screen time, avoiding harmful websites and ensuring children engage positively online can be difficult without proper monitoring tools. Set clear boundaries, encourage open discussions about online safety and use parental controls to manage content exposure and screen time effectively. Regular check-ins and positive reinforcement around digital habits encourage safe online behaviour.

2 PRACTICE FIRE SAFETY PROTOCOLS

The incidence of house fires increases during Christmas due to greater use of candles, cookers and electrical decorations. Open flames, electrical overloads and the need for quick response plans can make fire safety challenging. Ensure smoke detectors are operational, keep fire extinguishers on hand and teach children how to respond in case of a fire emergency. Avoid leaving cooking unattended and use fire-safe candles to prevent mishaps.

3 CREATE TRAVEL SAFETY PLANS

More families tend to travel during the holidays, resulting in busier roads, increased traffic accidents and weather-related hazards. Weather conditions, road rage, fatigue and busy airports can all compromise travel safety. Pack emergency kits and adhere to seatbelt laws. Plan routes in advance and allow extra travel time to avoid rushing and mitigate risks on busy roads.

4 BEWARE OF ALLERGIES

Holiday meals often involve many foods that may contain allergens. Cross contamination, unclear labelling and lack of allergy-friendly options can lead to severe reactions. Communicate any allergy needs to hosts, provide safe food alternatives and carry necessary medications like antihistamines or EpiPens. Teaching children how to advocate for themselves and recognise dangerous foods also contributes to safer celebrations.

5 PREVENT THE SPREAD OF ILLNESS

Cold weather and seasonal socialising can increase the spread of viruses like flu and COVID-19. Crowded gatherings, schools out of session and frequent travel can lead to higher infection risks. Emphasise hygiene, encourage vaccination, disinfect surfaces and isolate symptomatic individuals. Communication with children about proper hygiene practices is essential to reduce the spread of illness.

6 STAY VIGILANT ON THE ROAD

Increased holiday traffic heightens the risk of accidents for both drivers and pedestrians. Distracted driving, pedestrian safety and inclement weather can complicate road safety. Encourage pedestrian safety practices, avoid distracted driving and never drive under the influence.

7 MAINTAIN SAFE DECORATIONS

Festive decorations such as Christmas lights and candles can pose electrical, fire and choking hazards if mishandled. Frayed wires, topping Christmas trees, small ornaments and open flames can be difficult to control, especially in busy households with children. Inspect and maintain decorations, secure Christmas trees, place fragile or small items out of reach and ensure candles are never left unattended. Testing smoke alarms and using flame-retardant decorations can significantly reduce risks.

8 SET BOUNDARIES FOR GIFTS

Some toys and gadgets can present choking, sharp-edge or safety risks, particularly for young children. Ensuring that gifts meet safety standards and are age appropriate can be complex with so many options available. Inspect all toys carefully and ensure any tech devices have parental controls. Setting expectations around safe gift use and discarding packaging that poses a risk also helps to prevent accidents.

9 ADDRESS STRESS & FATIGUE

Holiday pressures can lead to burnout, which affects both physical and mental health. Overpacked schedules and a lack of downtime can cause stress and fatigue, leading to accidents or poor decision making. Incorporate rest, maintain regular routines and seek support to reduce stress. Encourage activities that promote relaxation to create a healthier, happier holiday experience for everyone.

10 DRINK RESPONSIBLY

Alcohol is commonly present at holiday events, raising concerns about safety and supervision. Excessive alcohol consumption can lead to accidents, impaired judgment and lack of supervision for children. Designate responsible adults, limit consumption and provide transportation alternatives for guests. Teaching moderation and modelling responsible behaviour in front of children ensures that celebrations remain positive and secure.

Meet Our Expert

James Whelan is a chartered health and safety consultant with 10 years of experience in promoting family and community safety. Specialising in risk assessment and preventative strategies, he has worked with educational institutions, public health agencies and community groups to deliver safety education and training.



The National College

Source: See full reference list on guide page at: <https://nationalcollege.com/guides/safety-over-the-festive-season>


SEND/ Health and Wellbeing



**My child has received a neurodiversity diagnosis ,
Where do I find out about local support services?**

**CHECK OUR
NEURODIVERSITY
SUPPORT PACK**



-  Includes a section on supporting local support services in Bedfordshire and Luton
-  Search for 'useful contact information and resources' on our website.
-  www.cambscommunityservices.nhs.uk/nsp

SEND/ Health and Wellbeing



OPEN DOOR COOKING CLUB

YOUTH CLUB WITH CHANCE TO
LEARN TO COOK HEALTHY MEALS
ON A BUDGET

EVERY MONDAY

DROP IN BETWEEN 3.30PM - 5.30PM

10-18 YEAR OLDS
OVER 6 YEAR OLDS WITH PARENT OR
CARER

CENTRAL BAPTIST CHURCH

CUMBERLAND STREET ENTRANCE, LU1 3ET



MORE INFO CONTACT

YOUTH@LUTON.GOV.UK
CHARLEY - 07712512741



Youth Partnership Service

Working together to empower, support and
safeguard children and young people in Luton

SEND/ Health and Wellbeing

Ask the Experts Luton Parent and Carer SEND Information Event Accessibility Guide



Together Improving
outcomes for SEND

The venue address is St Mary's Church Hall, Luton, LU1 3JF

Main Entrance

The main entrance to the hall is facing the main road, the door is usually kept closed so you will need to ring the doorbell. There will be a sign on the door saying LUTON SEND Ask the Experts Event Main Entrance, please ring the doorbell for entry and assistance.



Main Entrance

Disabled Access

Disabled access is to the side of the building. If you are at the main hall entrance move around the building to your right. The door is usually kept closed so you will need to ring the doorbell. There will be a sign on the door saying LUTON SEND Ask the Experts Event Wheelchair Friendly Entrance, please ring the doorbell for entry and assistance.



Wheelchair
friendly
entrance

Nearest Car Parks, Bus and Train Stations

Power Court Car Park 26 Power Ct, Luton LU1 3LJ (charges apply)

The Point Luton Car Parks – Please use postcodes LU1 2JX for Market Car Park, LU1 2HN for Central Car Park (charges apply)

You will be able to access this venue by using buses and trains that bring you to Luton Town Centre. This venue is approximately a 10 to 15 minute walk from Luton Train and Bus Station.

Facilities

This venue has male, female toilets and a disabled toilet that also has a baby change table. There is a quiet space within this venue, please ask a member of staff to assist you with this.



SEND/ Health and Wellbeing

Ask the Experts

Luton Parent and Carer SEND Information Event



Together improving outcomes for SEND

We are excited to share that Luton Children, Families and Education Services, EPIC Luton Parent Carer Forum, SENDIAS, and our Local NHS Services are coming together under one roof to support families with children who have or may have special educational needs and disabilities (SEND).

Come and join us to meet with teams working alongside children and young people with SEND in Luton. Find out about available support from your local services, seek guidance, connect with others and share your feedback with us, as our valued experts by experience.

Tuesday 21st January 2025

from 10am until 2pm

at St Mary's Church Hall, Luton, LU1 3JF

No need to book, just drop in! (please ring the doorbell when you arrive)

The teams due to attend and keen to meet you include:

- EPIC Luton Parent Carer Forum
- Cambridge Community Services
- Family Hubs
- Family First Luton
- Luton Transitions Team
- Luton SENS Team
- Luton Child and Educational Psychology Service
- Special Educational Needs and Disabilities Assessment Team (SENDAT)
- Luton Sexual Health
- SENDIAS (SEND Information and Advice Service)
- Bedfordshire Hospitals
- Luton Virtual School
- Luton Youth Partnership Service
- Community Paediatric Physiotherapy
- Luton Local Offer SEND Information Hub
- Cambridgeshire Community Services Children's Speech and Language Therapy Service
- ELFT- Specialist Learning Disability Services
- Supported Internships Team

For further information please contact SENDluton@luton.gov.uk



Community

FREE ENTRY

Push chair and wheelchair friendly

CHRISTMAS WONDERLAND

Saturday 21st December
12pm to 4pm

Cheddington Village Hall
Church Lane, Cheddington,
Leighton Buzzard LU7 0RU

Christmas Market, Cookie Decorating,
Snow Globe, Meet the Owls, Face Painting,
Slime Making, Sand Art, Games, Caricatures,
Henna, Mulled Wine, Mince Pies, Hot Chocolate,
pop up cafe, and much more



FREE ENTRY



WINTER WONDERLAND

Sunday 22nd December
12pm to 4pm

Weston Turville Village Hall
40A Main Street, Weston Turville,
Aylesbury, HP22 5RW

Christmas Stalls, Cookie Decorating,
Snow Globe, Caricatures, Meet the Owls,
Face Painting, Slime Making, Sand Art, Henna,
Mince Pies, Hot Chocolate, Games, pop up cafe,
and much more



Becoming a Childminder

Luton
Adult Learning



Would you like to inspire, educate and care for children?



Make a difference to a child and their family?



Have the satisfaction of running your own business with hours to suit you?

Our free* Becoming a Childminder course could be for you!

This 6-week course will provide you with the information you need to consider if you are thinking of becoming a childminder. You should leave the course with a clear pathway of next steps to register as a childminder.

If you are interested drop in to our centre on the 2nd floor Arndale House for an assessment or call us to find out more information.



Thursday 9 January



9.30am – 11.30am



Arndale House, The Mall



info@lutonacl.ac.uk



01582 490033



Education & Skills
Funding Agency

Ofsted
Good
Provider

*Subject to eligibility. You will need to show us that you have been a resident in the UK for more than 3 years.