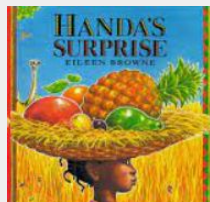


Communication and Language, Literacy

Key texts: Handa's surprise

This half term we will be learning the story of Handa's Surprise. We will imitate the story by using a text map and innovate by changing characters of the story. We will learn the new version of the story and retell this by creating a new text map. We will continue to write sentences, focussing on carefully forming our letters and using capital letters and full stops.



Expressive Arts and Design

We will learn how to join materials and and exploring different textures. We will develop our skills to create a weaving basket for Handa, as well as learning how to fold paper to create a paper snake.

In our role-play areas we will be using our imagination to take on different roles such as shopkeepers and customers in our fruit and veg role-play and travel advisors in our travel agent role play.



Year R Curriculum Map Summer 1 2024

Value Diversity

Whipsnade Zoo- Thursday 16th May

Understanding the World

Linking to our book, we will be exploring different countries and cultural differences. We will compare life in England to Handa's life in Kenya. We will continue developing positive attitudes about the differences between people. We will learn about similarities and differences about Easter and Eid, and find out how people celebrate around the world. We will look at the changing seasons and continue to look out for signs of spring. We will discuss different materials and explore their properties.



Physical Development

This half term we will be practising athletic skills in preparation for sports day.

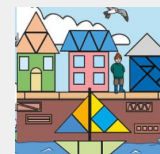
We will learn how to perfect our throwing, aiming, running, catching and jumping skills. We will learn how to work as a team and develop our sportsmanship. We will help and support each other to reach our goals.



Maths

This half term we will be looking at numbers beyond 10. We will look at number counting patterns beyond 20 and how to add and take away numbers. Using our prior learning, we will continue to practise learning our number bonds to 10.

We will be expanding on our knowledge of shapes by rotating and manipulating shapes. We will explain how shapes are constructed by looking at the key features of shapes.



Personal, Social, Emotional. Development

We will be learning about relationships. We will learn about the role in our family, We will look at what jobs we can do to help our family, We will learn how to make friends and stop myself from feeling lonely. We will look at how to solve problems in friendships and understand the impact of unkind words. We will learn how to be thoughtful and use kind words.

